

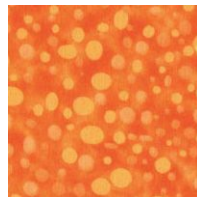
## COLOR CHART

Note: there is no direct correlation between the Fizz color way and the Buttons & Blooms color way.

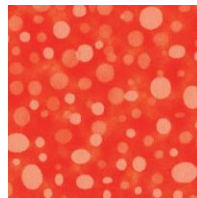
### FIZZ



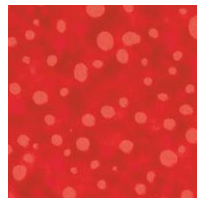
YY



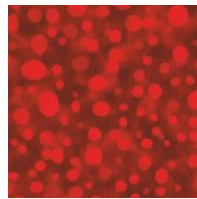
O



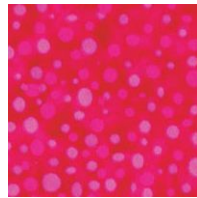
OO



R



RR



F

### BUTTONS & BLOOMS



22018 GOL1



22018 BLU1



22018 RED1



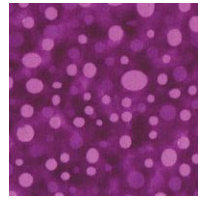
22019 BEI1



22013 DKTAN1



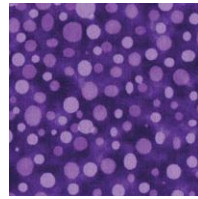
22013 GRE1



V



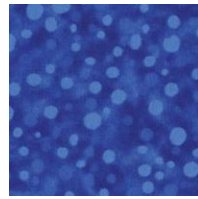
22014 TAN1



C



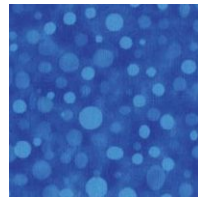
22015 LTBEI1



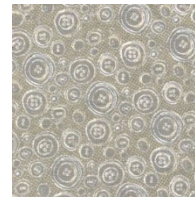
N



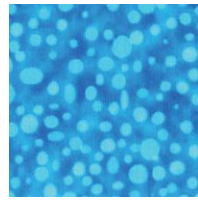
22014 DKBRO1



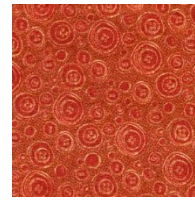
BB



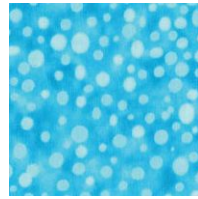
22015 LTGRy1



T



22015 RED1



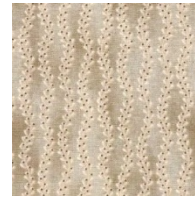
LT



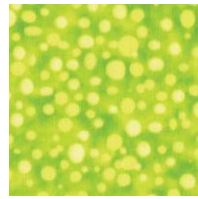
22015 BRO1



TT



22017 BEI1



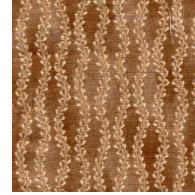
YG



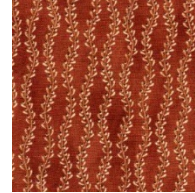
22017 TEA1



SEDONA STAR  
BY SARAH VEDELER FOR THE QUILT SHOW



22017 BRO1



22017 RED1